

Lake County Economic Trends

November 20th 2013

Dr. Bala Arshanapalli
Professor of Finance
Indiana University Northwest
barshana@iun.edu

Dr. Micah Pollak
Assistant Professor of Economics
Indiana University Northwest
mpollak@iun.edu

*Special thanks to the
School of Business & Economics and the
Office of the Chancellor*



**INDIANA UNIVERSITY
NORTHWEST**

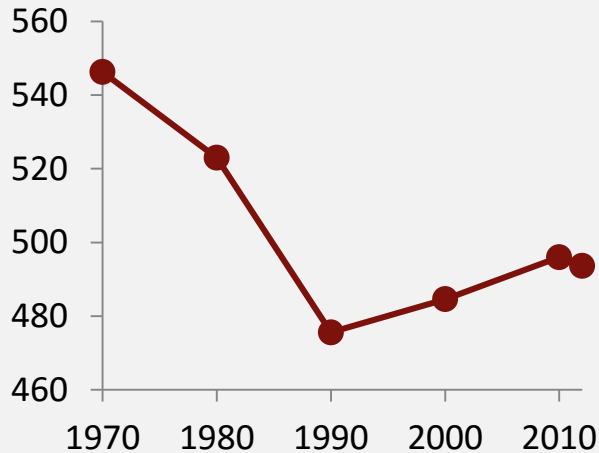
SCHOOL OF BUSINESS AND ECONOMICS

From 1970 to 2012 in Lake County, Indiana....

Population

fell by 9.6%
(-52,000 people)

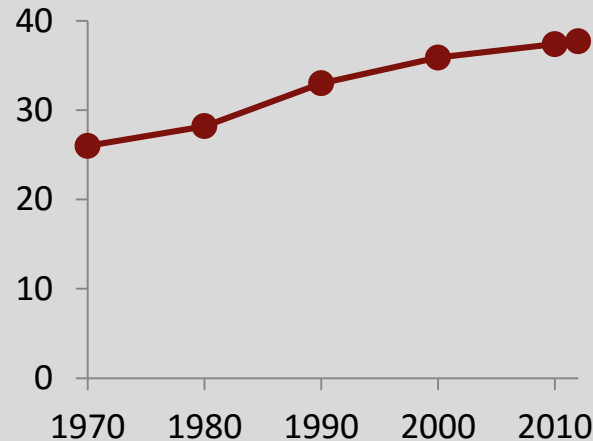
Population (thousands)



Age

increased by 43%
(+11.7 years)

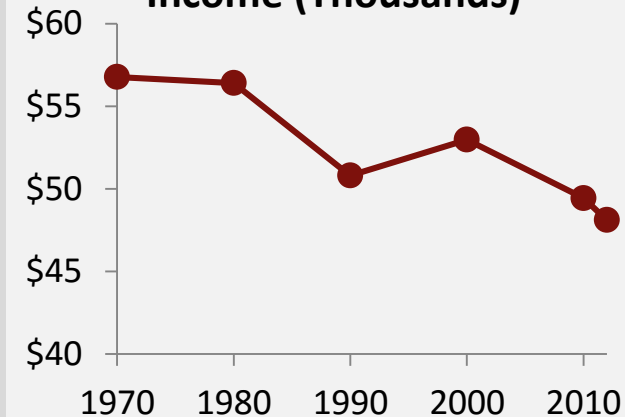
Median Age (years)



Income

fell by 15.25%
(-\$8,000 household/year)

Median Household Real Income (Thousands)



In comparison over the same time period....

*The U.S. population
increased by 53%*

*The U.S. median age increased
by 33% (+9.3 years)*

*The U.S. median income
fell by 4.6%*

Lake County - Major Cities

- Nine cities in Lake County with 20,000+ population
- Group these cities by 2010 median household income:

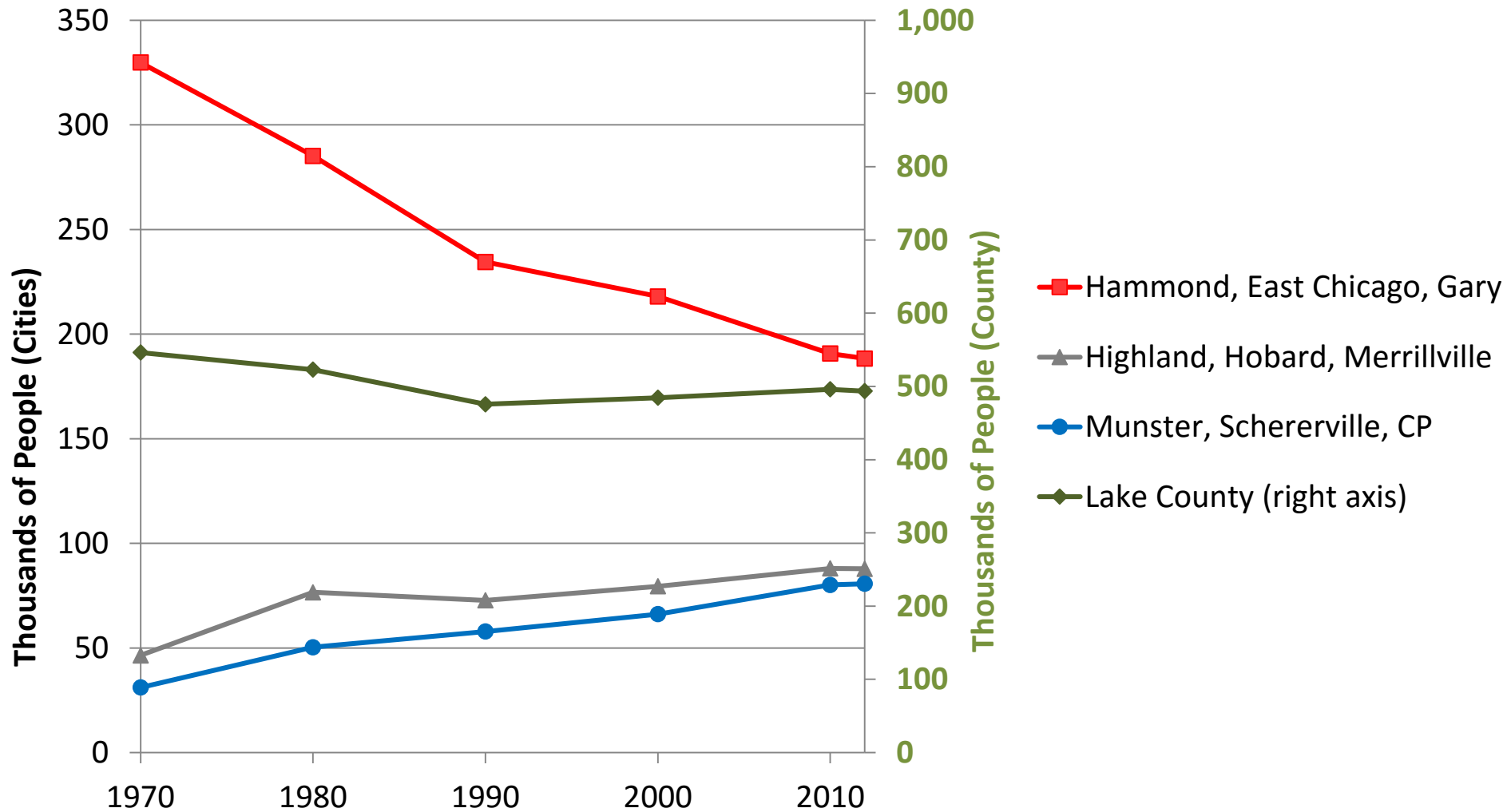
Group One (\$20,000 to \$40,000)	Gary East Chicago Hammond
-------------------------------------	--

Group Two (\$40,000 to \$61,000)	Merrillville Hobart Highland
-------------------------------------	---

Group Three (Over \$61,000)	Crown Point Schererville Munster
--------------------------------	---

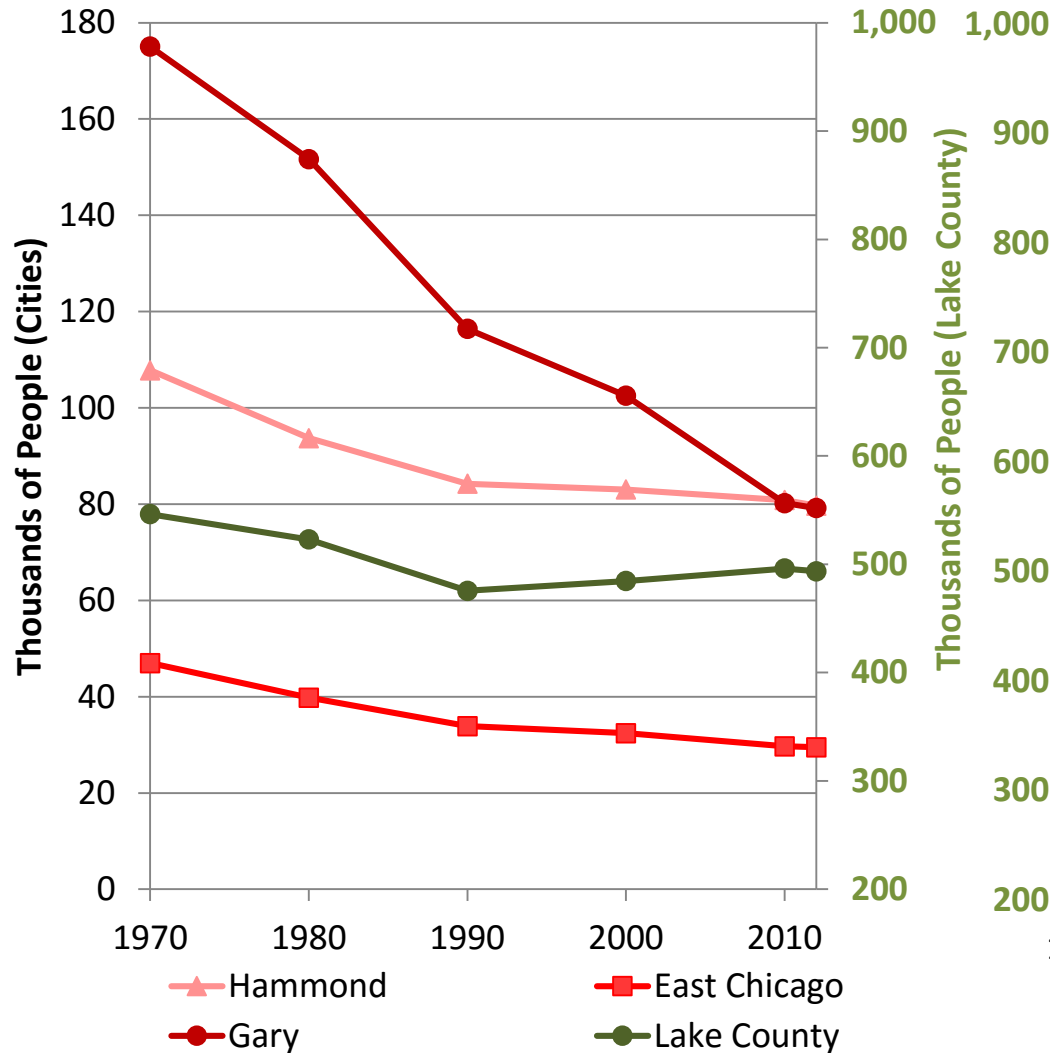


Population - Overview

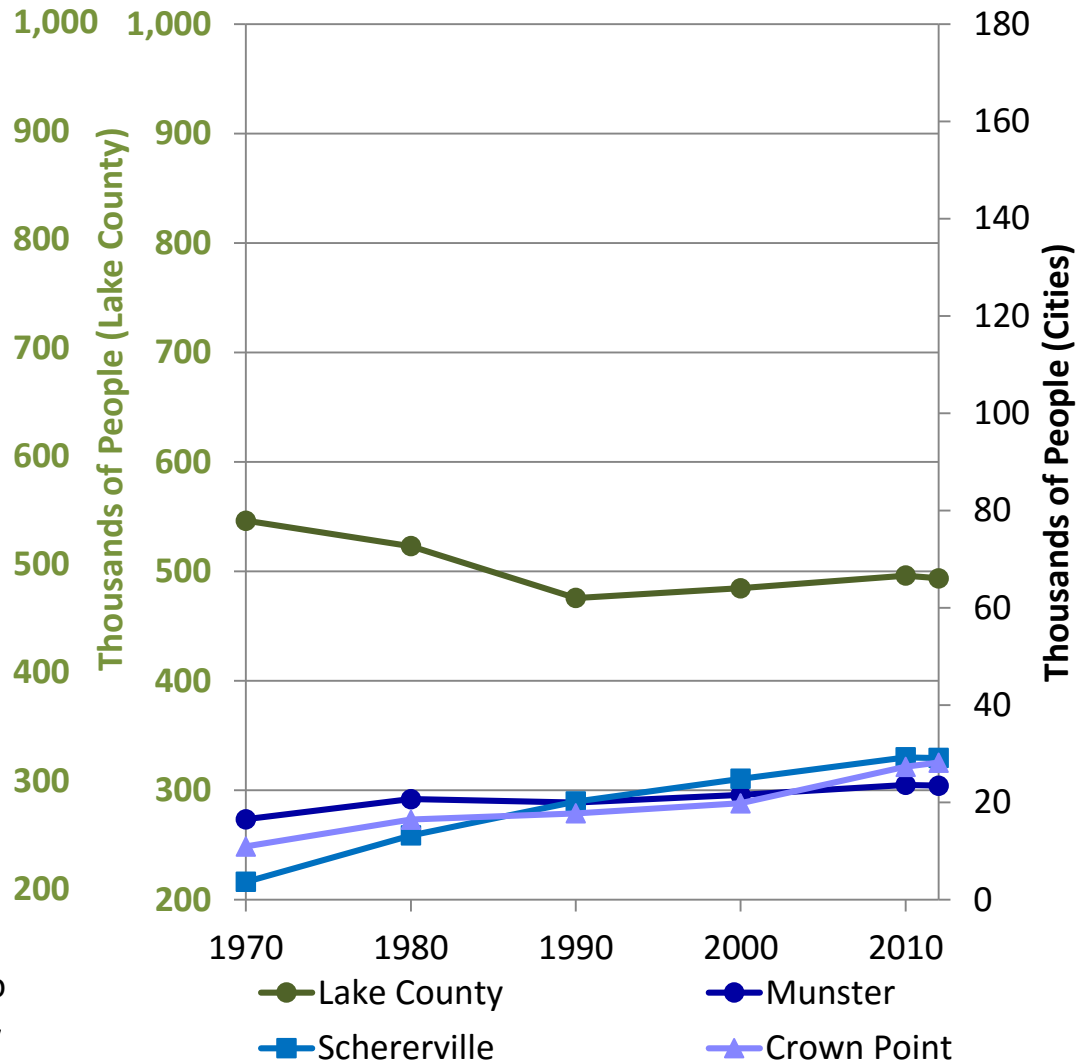


Population - Detail

Hammond, EC, Gary



Munster, Schererville, CP



Population - Detail

- Between 1970 and 2010 the population in ...
 - **Lake county** fell by 9.2% (-0.24%/yr.)
- In the urban core, population in...
 - **Hammond** fell by 25% (-0.7%/yr.)
 - **East Chicago** fell by 37% (-1.1%/yr.)
 - **Gary** fell by 54% (-1.9%/yr.)
- In comparison, population in...
 - **Munster** increased 42.9% (+0.9%/yr.)
 - **Crown Point** increased 150% (+2.3%/yr.)
 - **Schererville** increased 700% (+5.3%/yr.)

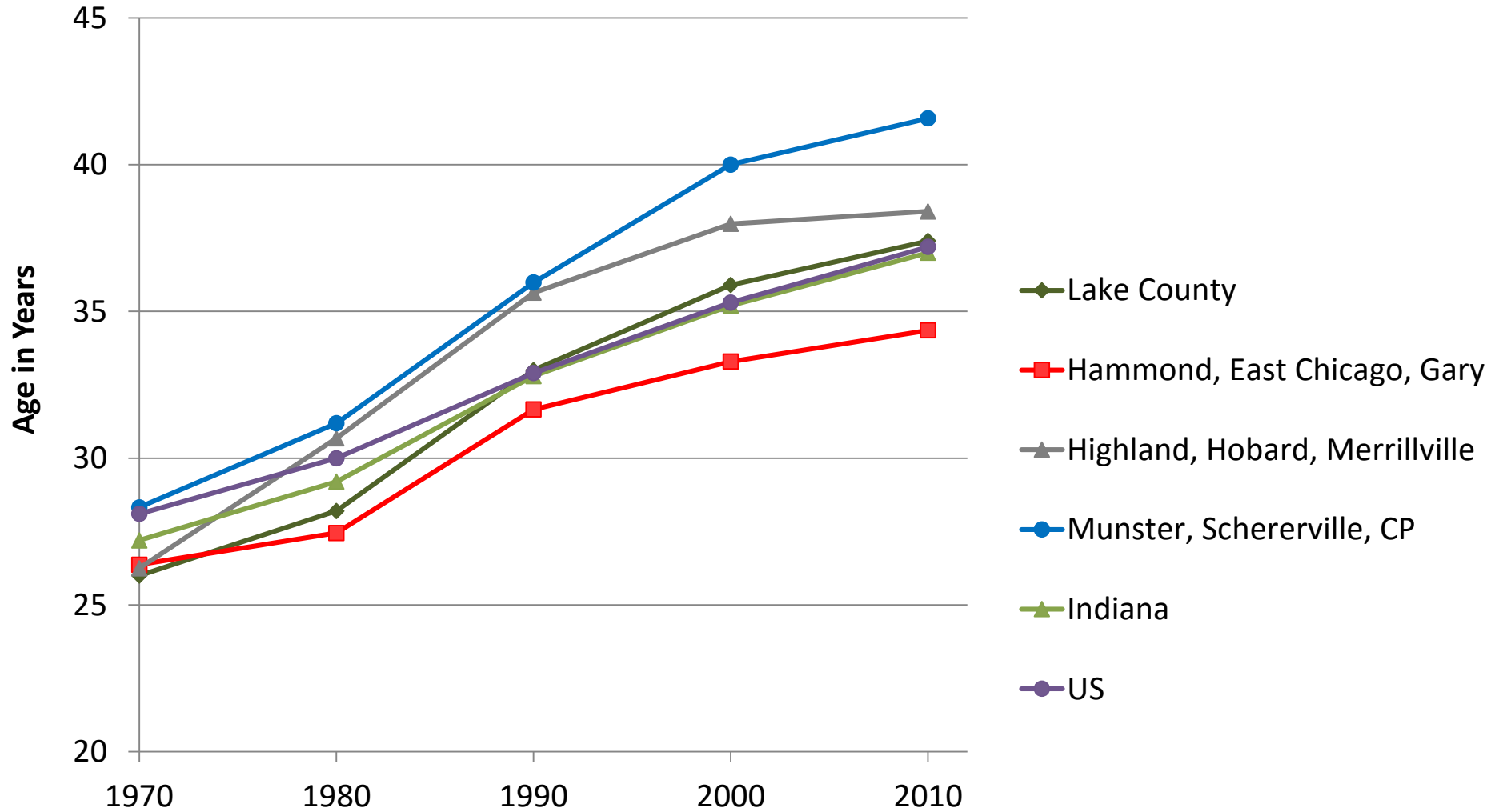
Population – In Context

- Lake County population growth and other counties...

Northwest Indiana County	Average Annual Population Growth		County rank in Indiana (out of 93 counties)	
	1990-2000	2000-2010	1990-2000	2000-2010
Lake County	0.19%	0.23%	74th	44th
Porter	1.31%	1.14%	23 rd	12 th
Newton	0.72%	-0.22%	51 st	75 th
Jasper	1.87%	1.09%	9 th	13 th
LaPorte	0.28%	0.12%	71 st	57 th
<i>Median County</i>	<i>0.75%</i>	<i>0.23%</i>		

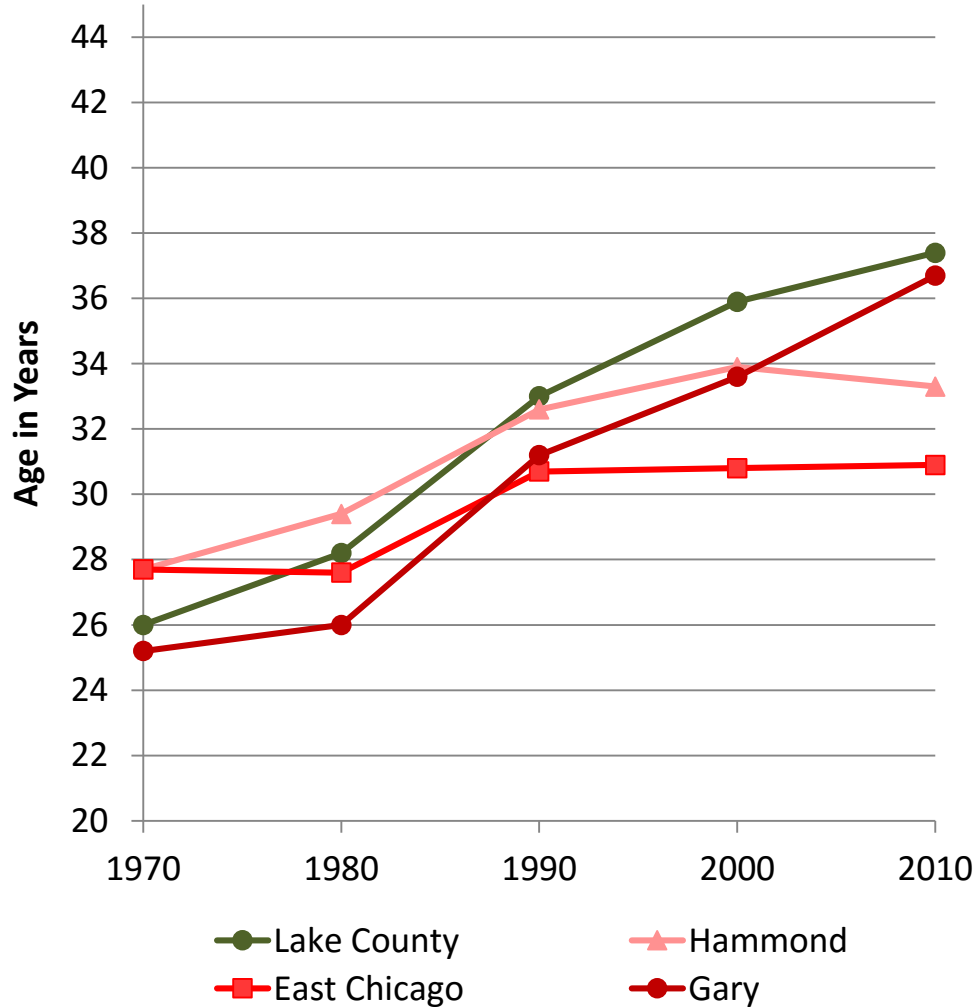
- For 2000-2010 Lake County was average for the state

Average Median Age - Overview

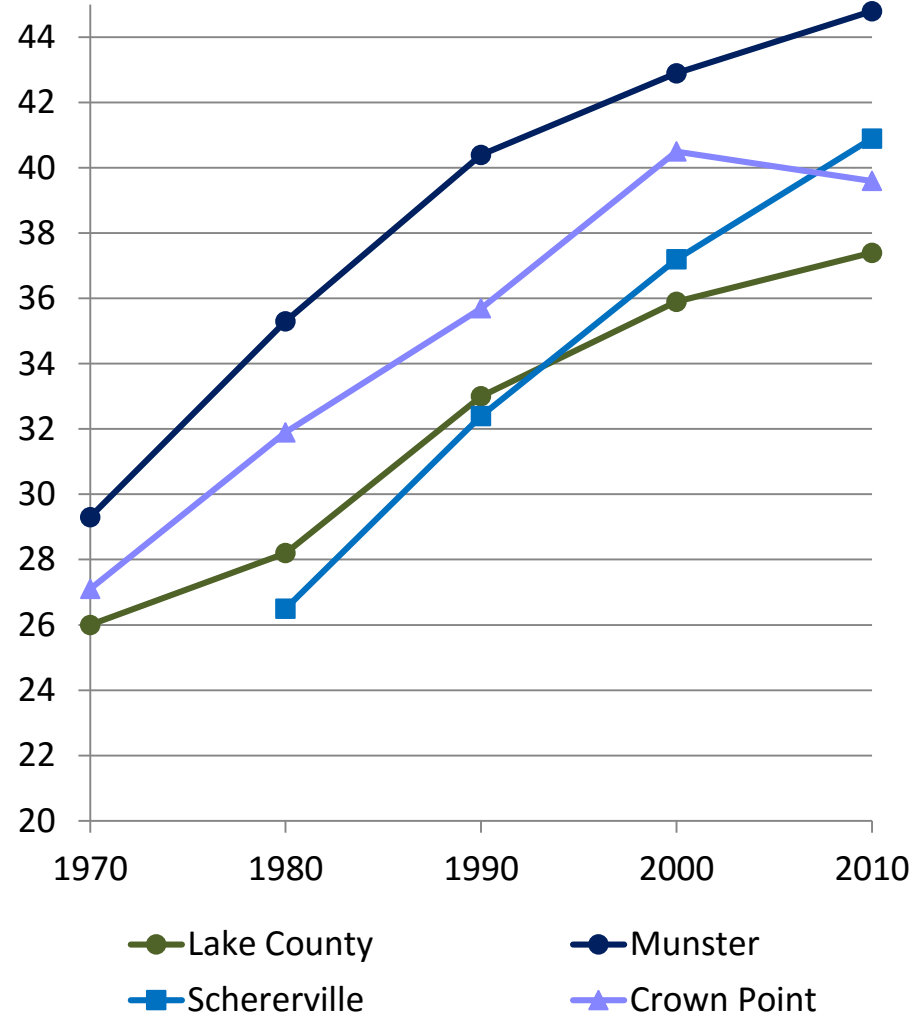


Median Age - Detail

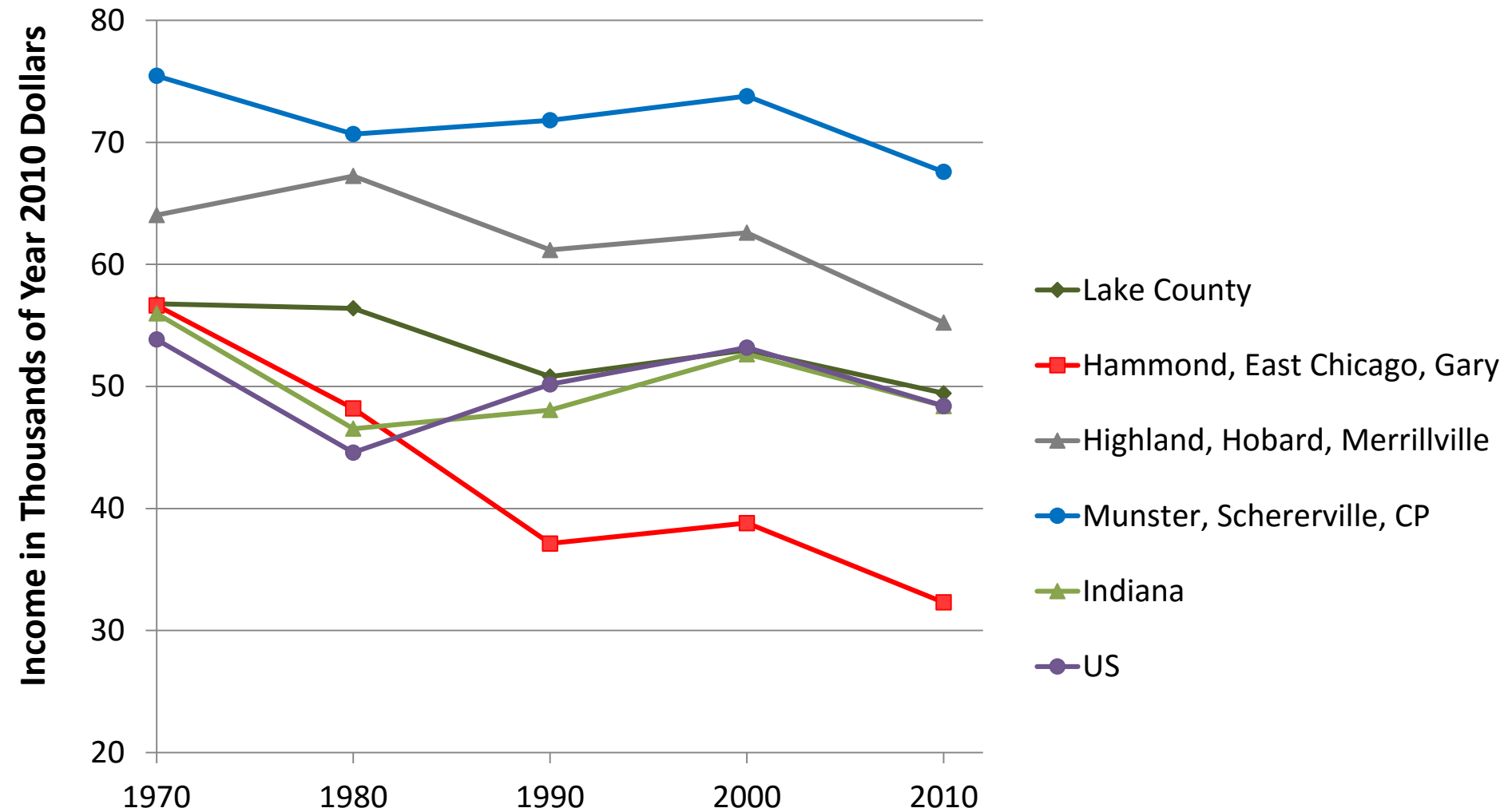
Hammond, EC, Gary



Munster, Schererville, CP



Average Median Household Income - Overview



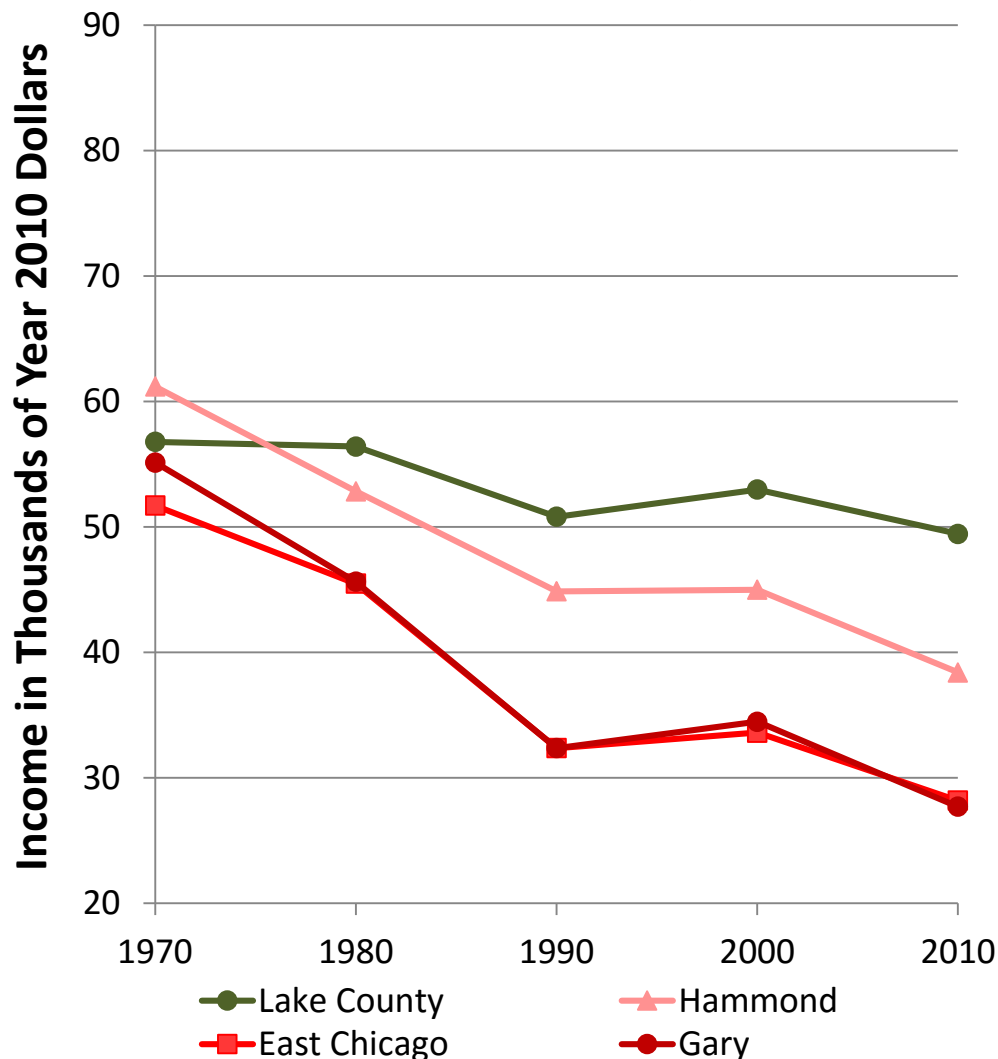
Adjusted for inflation in year 2010 dollars.

Source: U.S. Decennial Census, 1970-2010 (<http://www.census.gov>)

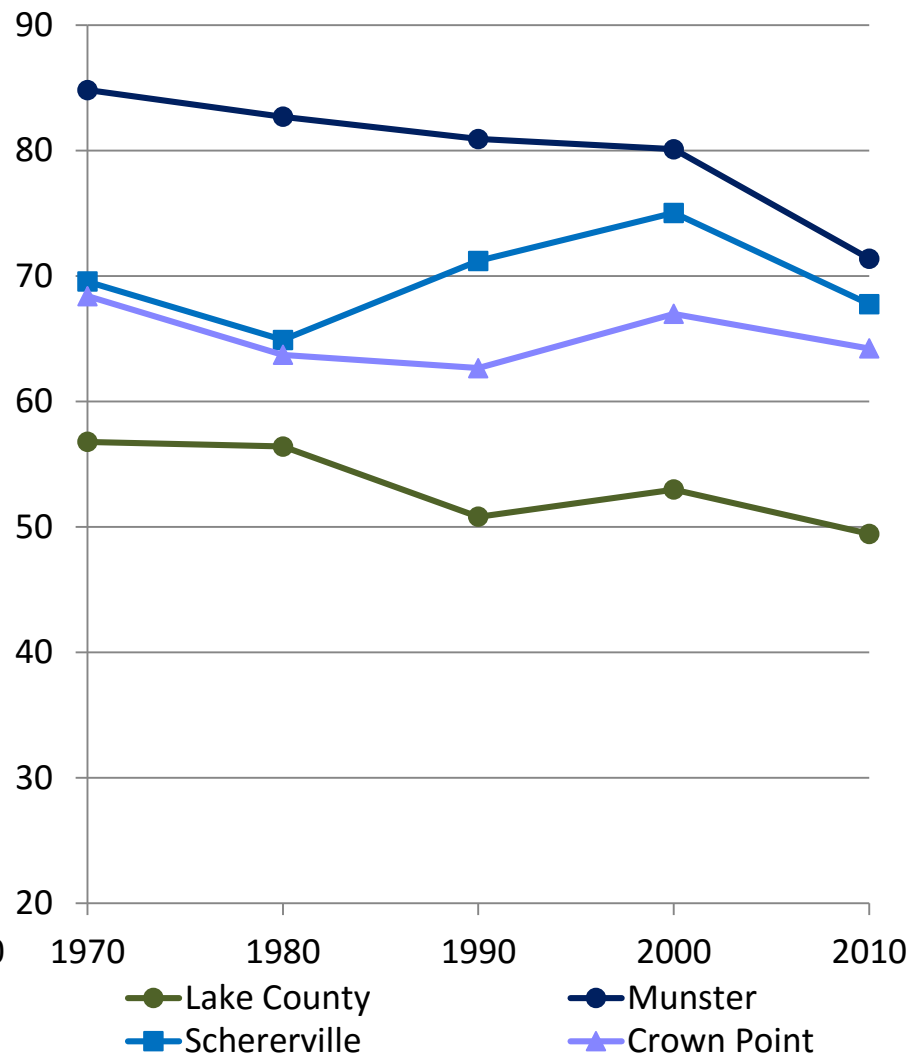


Median Household Income - Detail

Hammond, EC, Gary



Munster, Schererville, CP



Adjusted for inflation in year 2010 dollars.

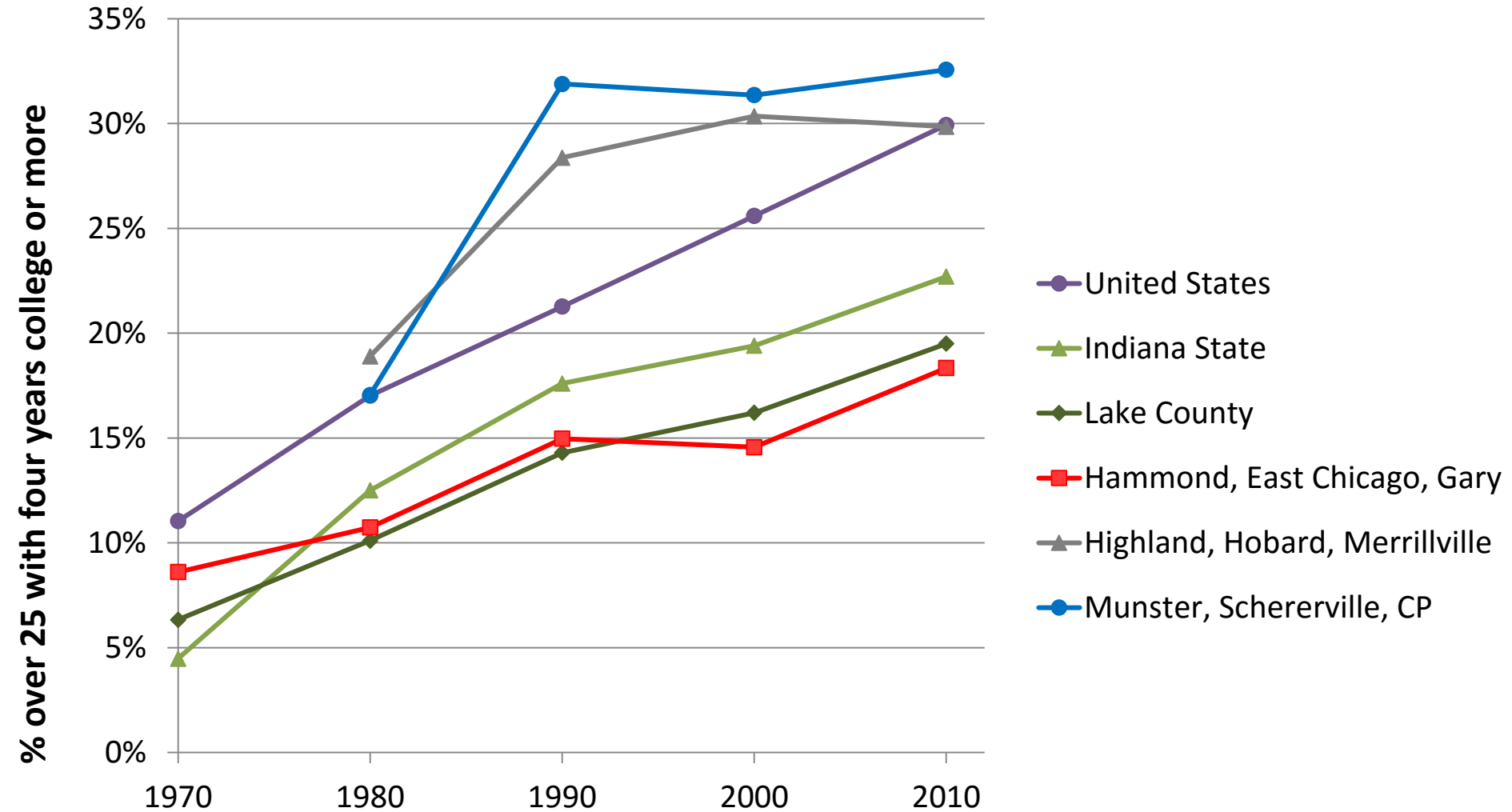
Source: U.S. Decennial Census, 1970-2010 (<http://www.census.gov>)



INDIANA UNIVERSITY
NORTHWEST

SCHOOL OF BUSINESS AND ECONOMICS

College Education - Overview



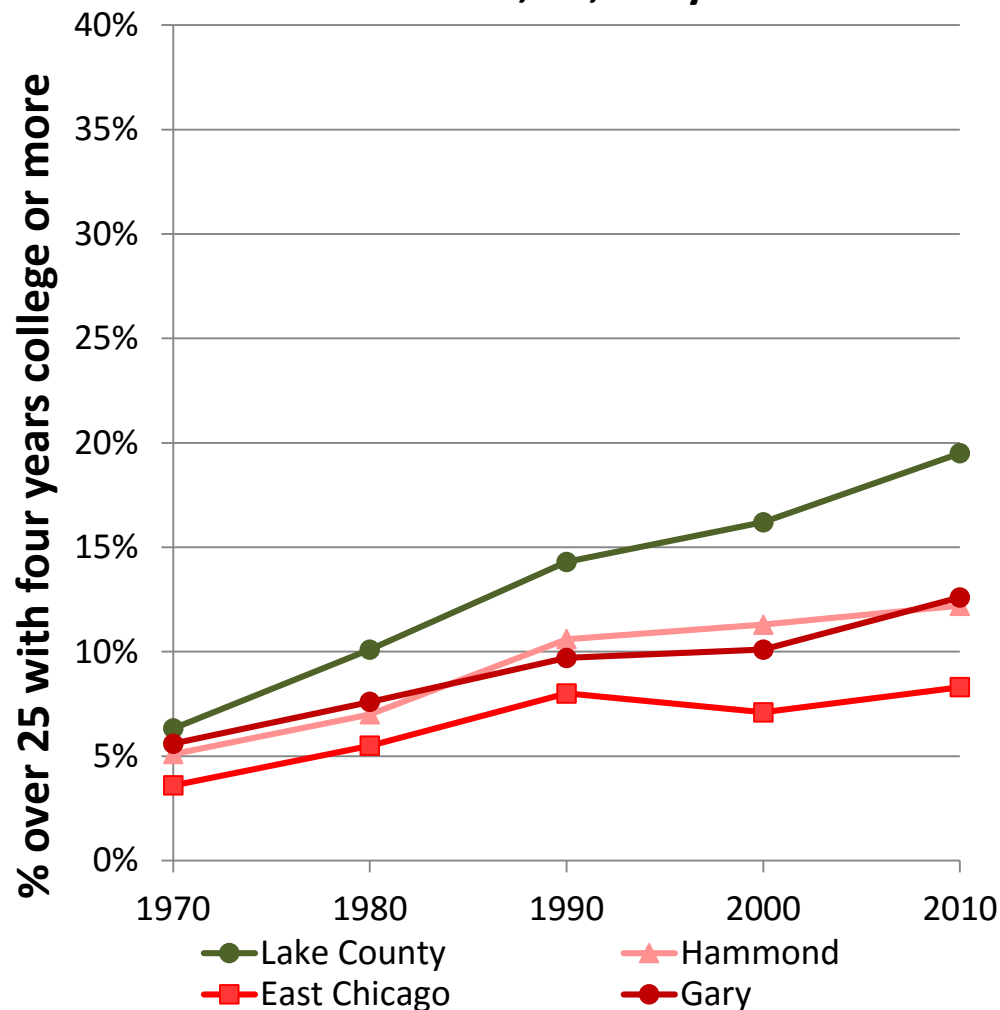
Note: 1970-1990 uses “% with four or more years of college” while 2000 & 2010 use “% completed bachelor’s degree”

Source: U.S. Decennial Census, 1970-2010 (<http://www.census.gov>)

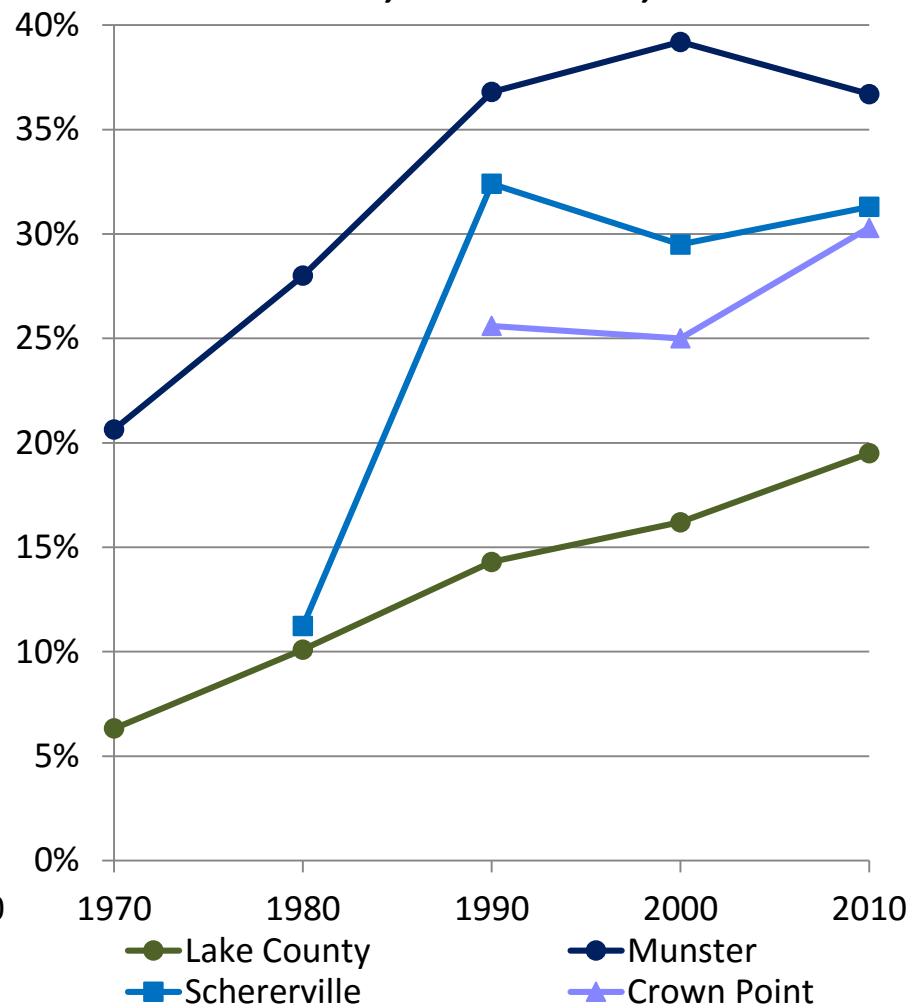


College Education - Detail

Hammond, EC, Gary



Munster, Schererville, CP



Note: 1970-1990 uses “% with four or more years of college” while 2000 & 2010 use “% completed bachelor’s degree”

Source: U.S. Decennial Census, 1970-2010 (<http://www.census.gov>)



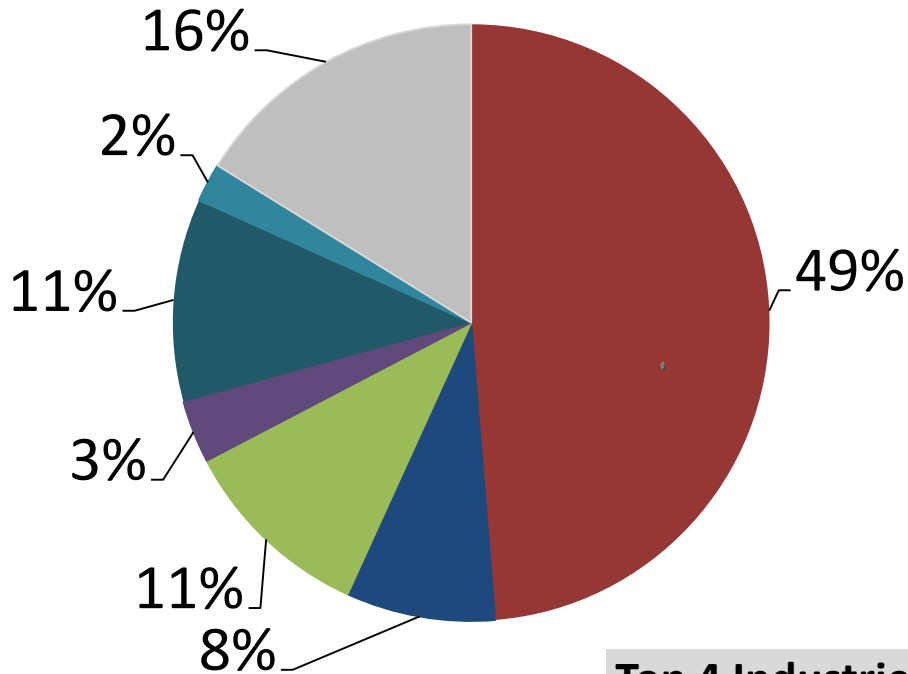
INDIANA UNIVERSITY
NORTHWEST

SCHOOL OF BUSINESS AND ECONOMICS

Employment by industry, Gary-Hammond-East Chicago

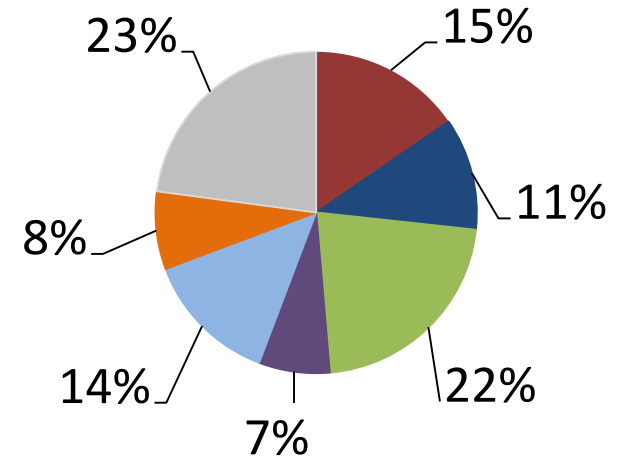
1970

Total employment: 122,546



2010

Total employment: 69,995
(43% decrease from 1970)



Top 4 Industries (1970 & 2010)

Next largest industries (1970)

- Construction
- Finance & real estate
- Other industries

■ Manufacturing

■ Retail trade

■ Education & Healthcare

■ Transportation

Next largest industries (2010)

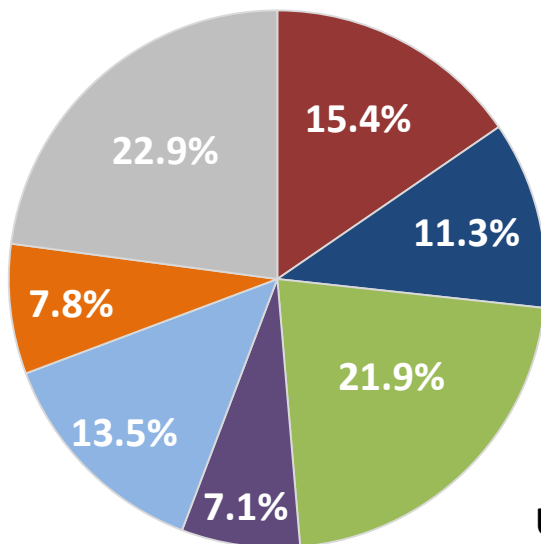
- Entertainment & recreation
- Professional services
- Other industries



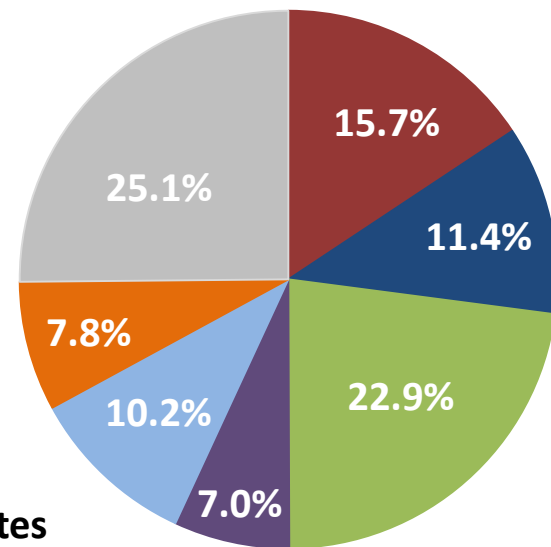
Employment by industry – national comparison

- Manufacturing
- Retail trade
- Education & healthcare
- Transportation
- Entertainment & recreation
- Professional services
- Other industries

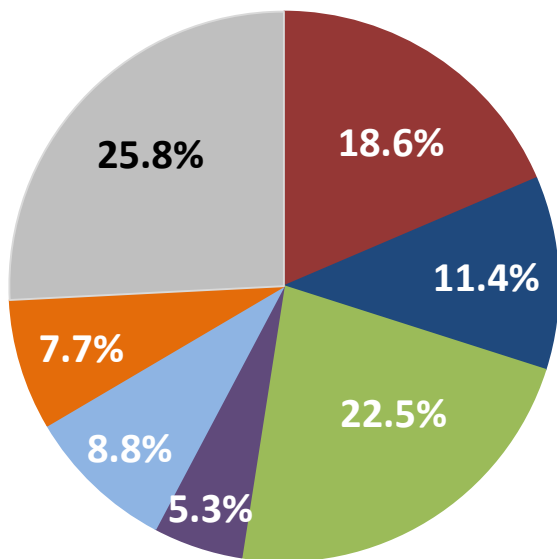
Gary-Hammond-East Chicago



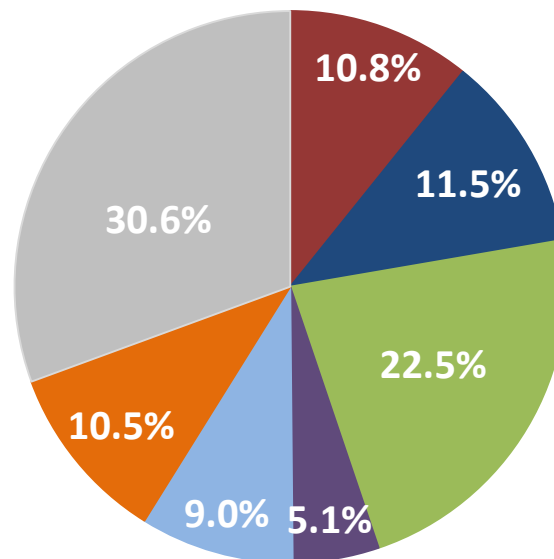
Lake County



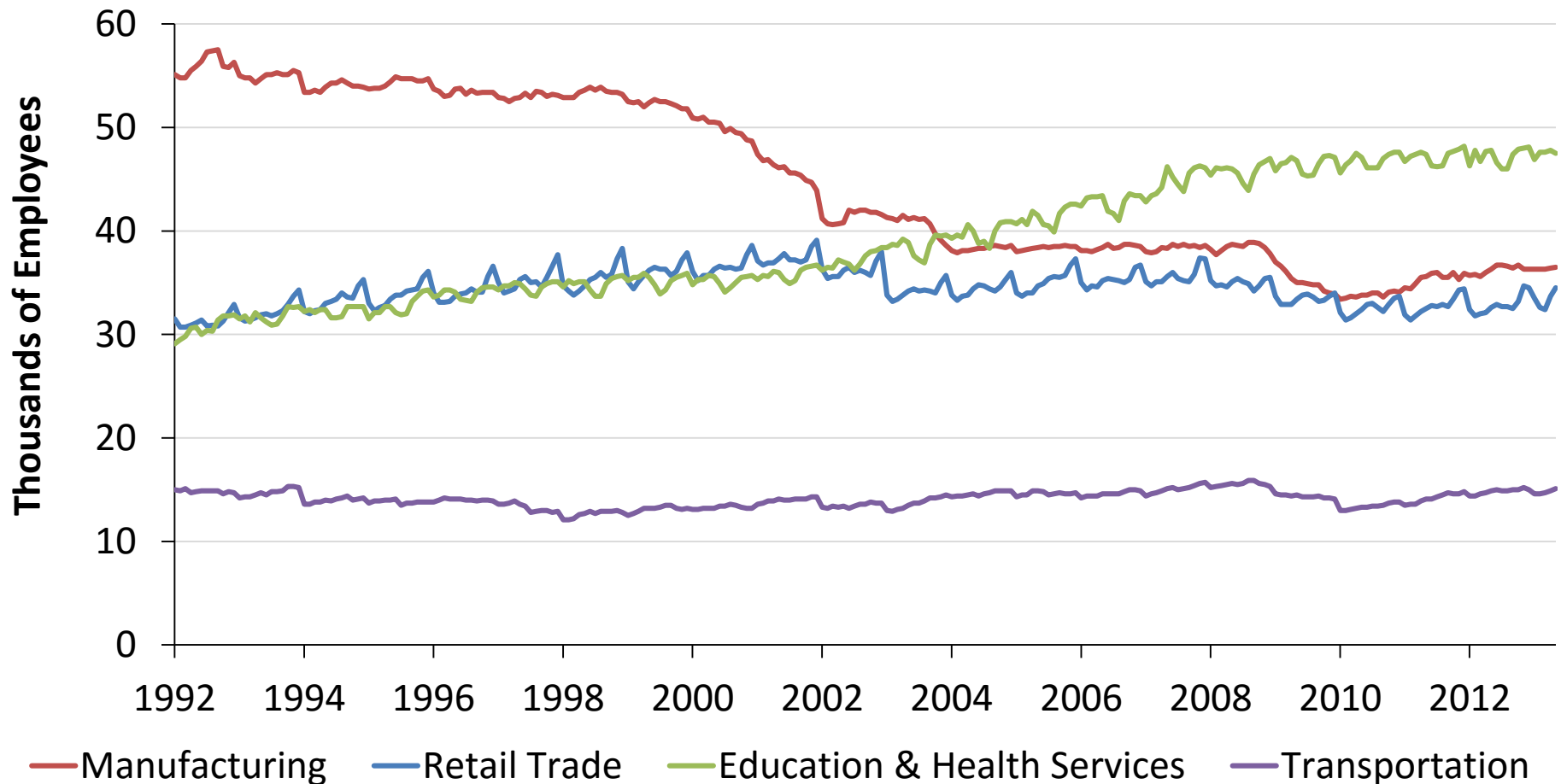
Indiana



United States



NWI Employment (Top four industries)



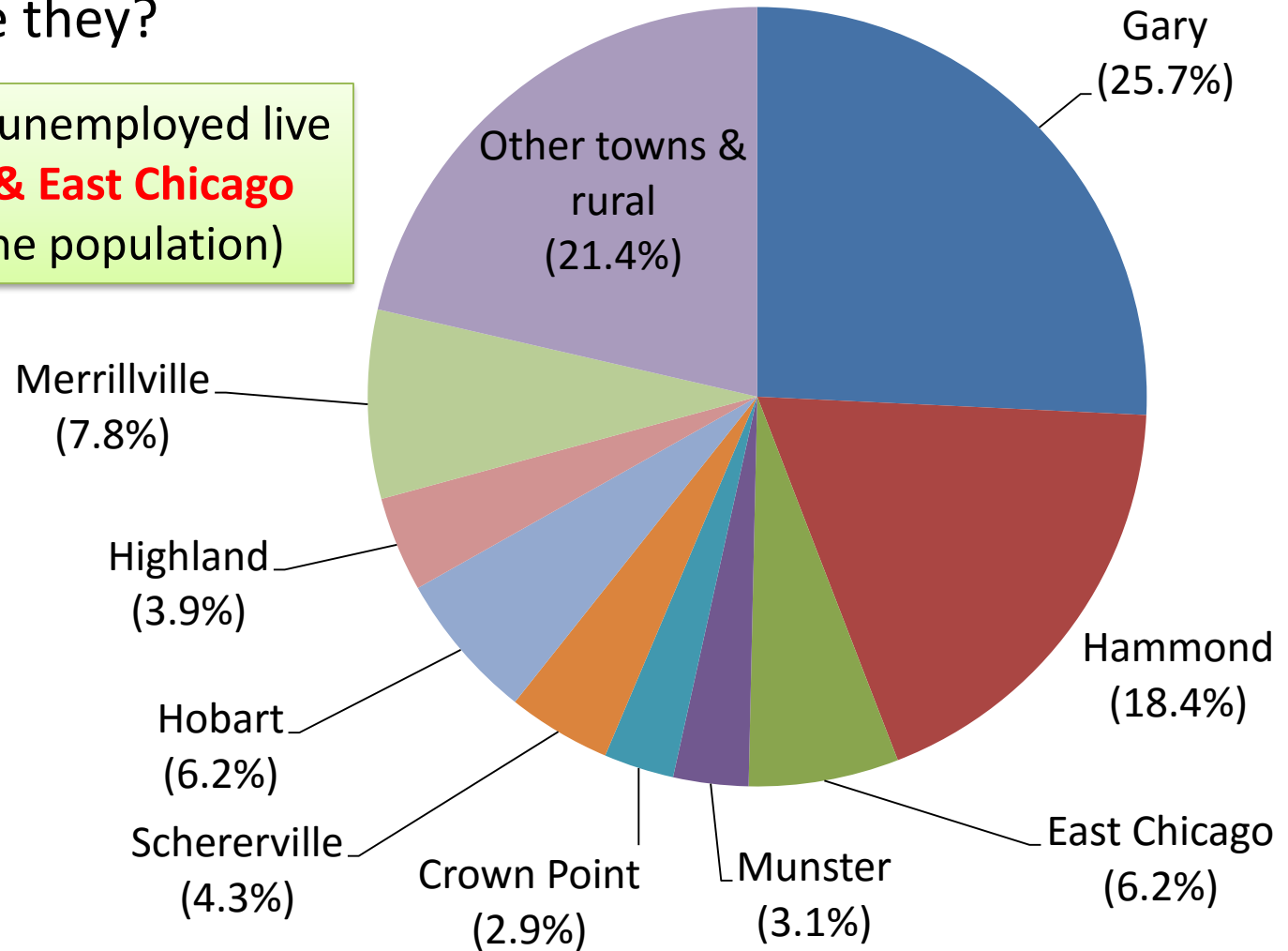
- Employment in Manufacturing continues to weaken while Education & Health Services has been expanding.

Data are combined for Lake, Porter, Newton, and Jasper counties.

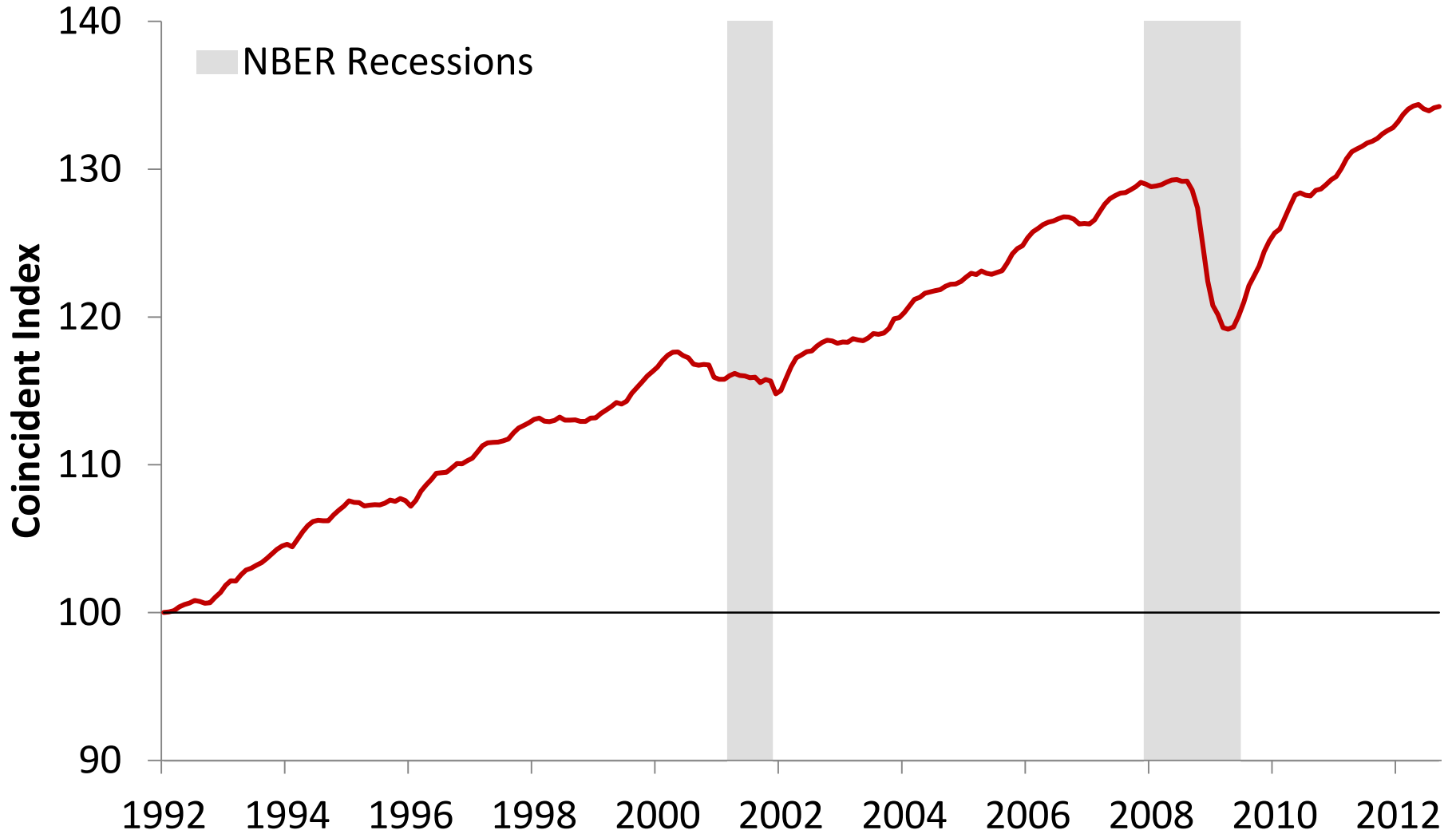
Unemployed in Lake County

- In 2010, Lake County had 24,779 unemployed persons
 - Where were they?

50% of Lake County's unemployed live in **Gary, Hammond & East Chicago** (with only **38%** of the population)



NWI Coincident Index

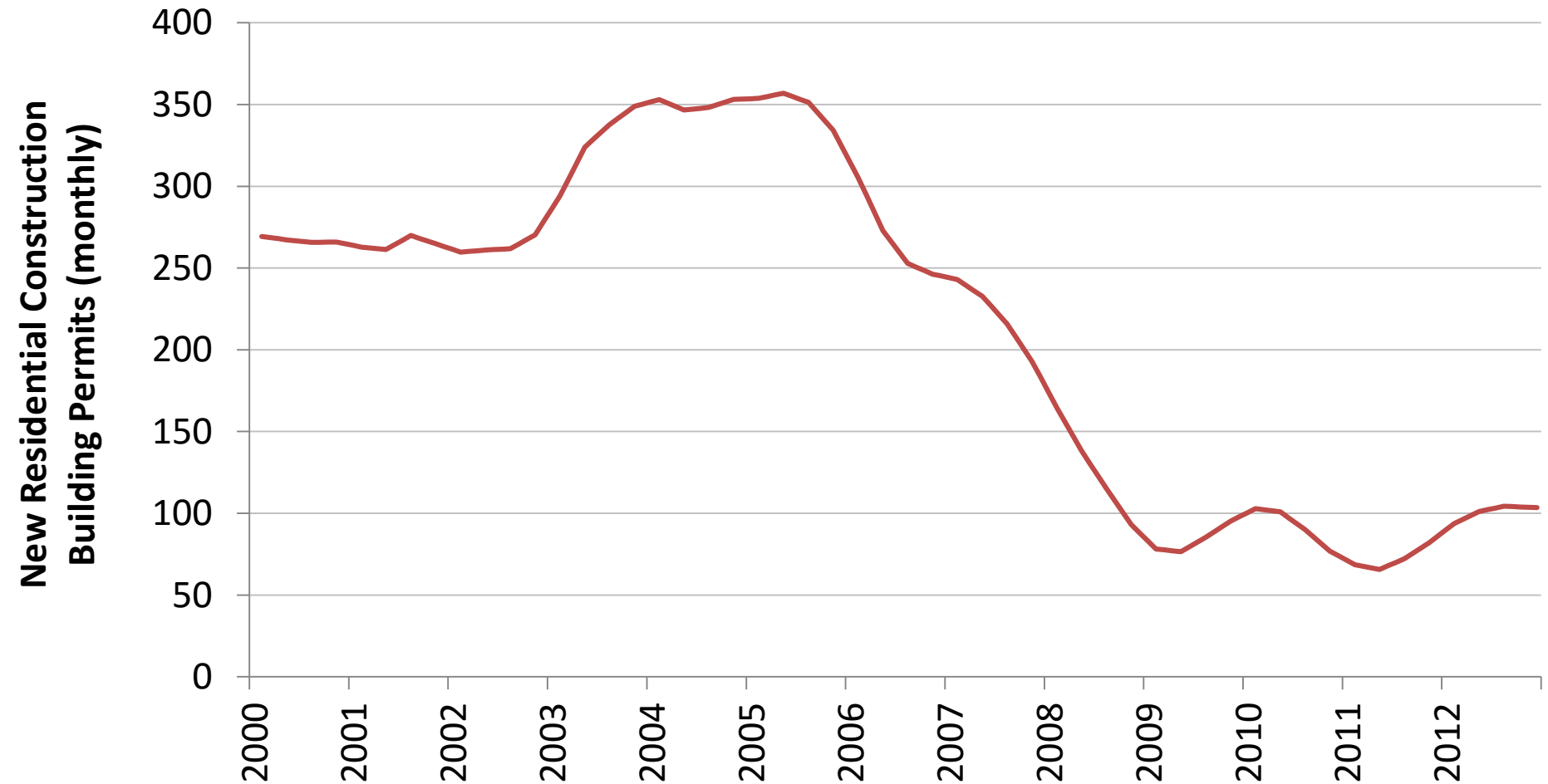


Released monthly, available at
<http://www.nwiindex.com>



INDIANA UNIVERSITY
NORTHWEST
SCHOOL OF BUSINESS AND ECONOMICS

NWI Construction Trends



- Residential construction is still weak.

Data are combined for Lake, Porter, Newton, and Jasper counties.

Source: U.S. Census Building Permits Survey (<http://www.census.gov>)

